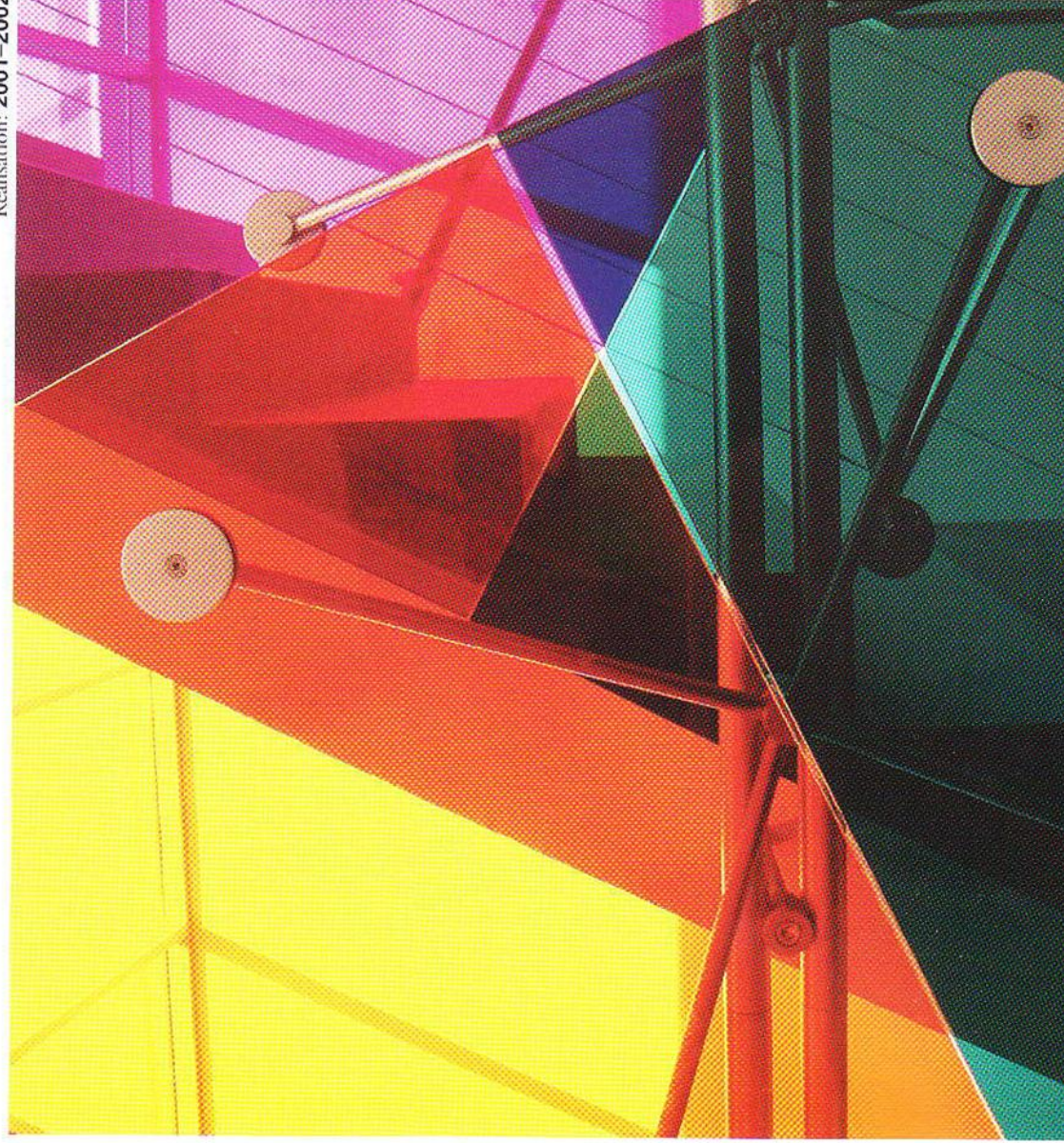
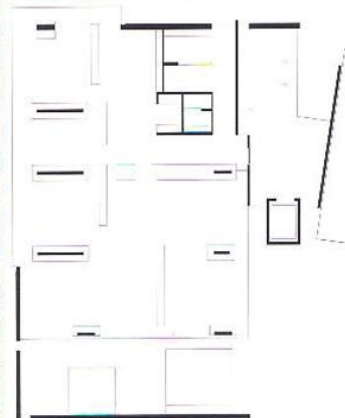
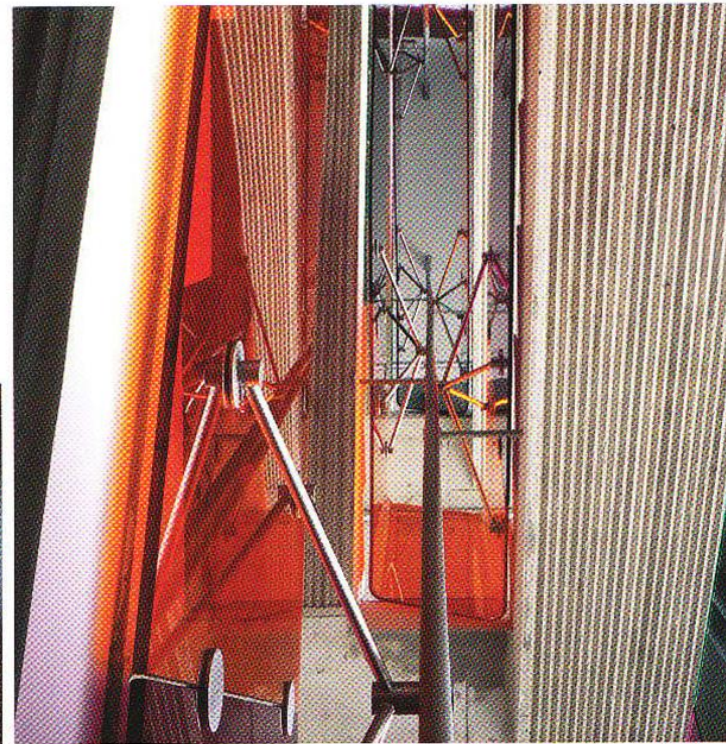


7.
**LINDE
OFFICE BUILDING**

Ljubljana, Vodovodna cesta 99
Associates: **Vesna Vozlič - Košir,**
Tomaž Slak, Klemen Vodnik
Plans: 1999–2001
Realisation: 2001–2002

Matej Vozlič





The building is situated on a fairly unfavourable location in the middle of a degraded industrial zone on the outskirts of Ljubljana. The architect tried to protect the contents against the environment, and so created a rather introverted building. On the first floor, in front of the main facade, is a closed patio to which the majority of offices are oriented. The patio, with its pool, greenery and wooden floor, creates an artificial external ambience to the building. The greyness of the surroundings is enlivened by vivid ornamentation made of coloured plexi-glass on the balcony and the staircase. The basement is intended for parking, the first two storeys above it for commercial premises, and the top floor has two squash courts for recreation and relaxation.